

Robert G. Curr
Partnership, Inc.
Architects, Planner
Interior Designers
Robert G. Curr
Jess M. Sowards
Jose' N. Aguilera
AIA

ISSUED FOR
BIDS
PERMIT
CONSTRUCTION 12.10.02

SEAL
ROBERT G. CURR
PROFESSIONAL SURVEYOR AND LAND SURVEYOR
STATE OF FLORIDA (PSM# 088)

PROJECT TITLE

RECORD DRAWING
DATE: 12/10/02
BY: JAVIER
CHECKED: JAVIER
DRAWING: JAVIER
PAVING & GRADING ASSEMBLY

EAST TRANSPORTATION FACILITY
VELCON GROUP INC.
ENGINEERS & SURVEYORS
135 N.E. 1st Avenue
Deer Beach, Florida 33444
TEL: 561 278-6951
FAX: 561 243-8184
E-mail: RGC@RGCUREARC.COM

CLIENT APPROVAL

REVISIONS
1. COORD./PERMIT - 12.10.02
2. SEE MARKS 12-18-02
3. SEE MARKS 8-13-03

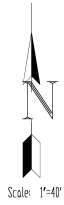
FILE NUMBER 1023
DRAWING TITLE
PAVING, GRADING AND DRAINAGE

DATE: DRAWN BY:

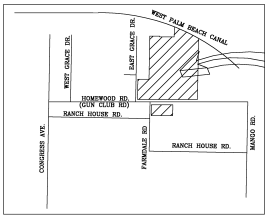
JOB NUMBER

DRAWING NUMBER

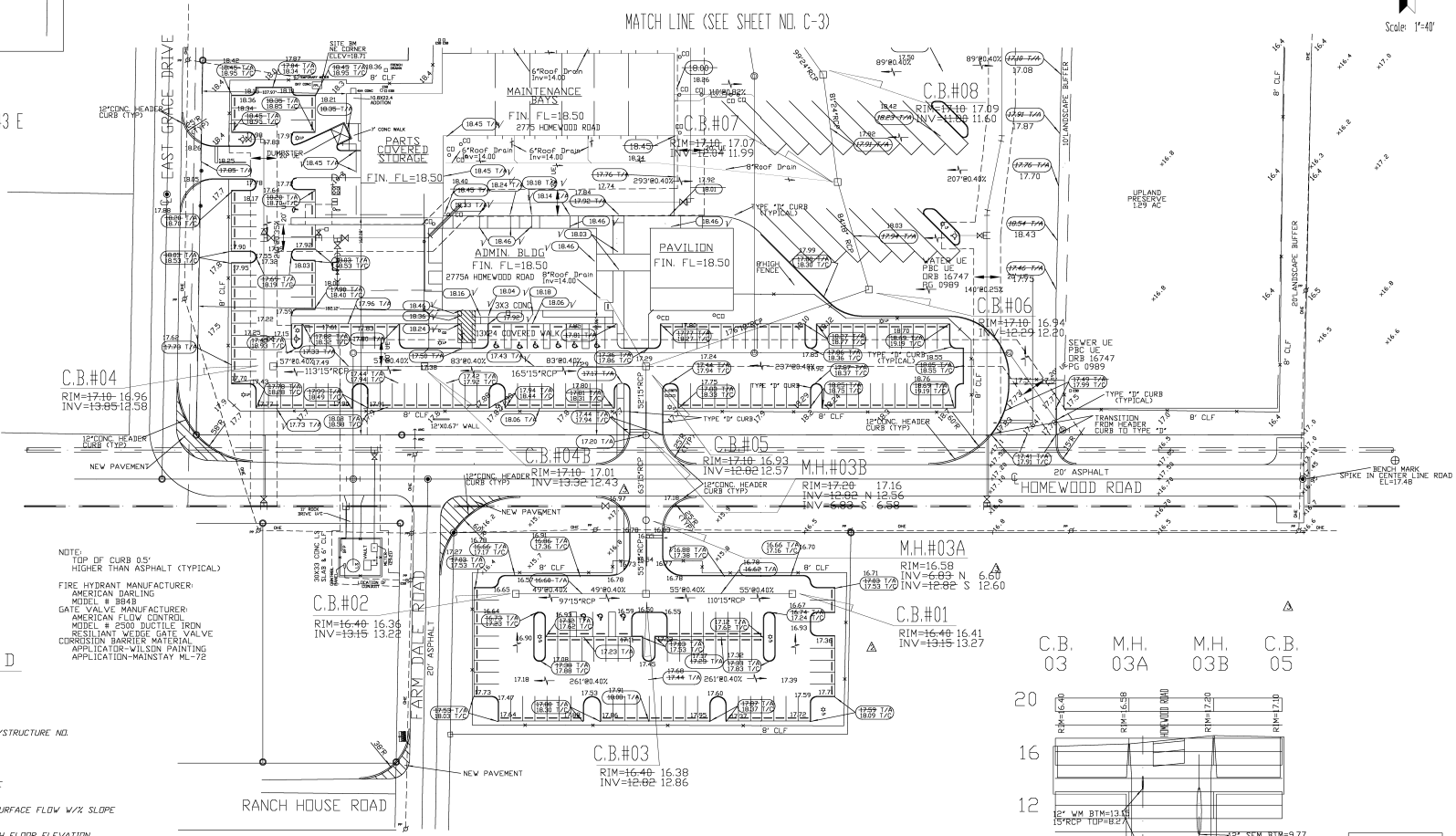
C.2



Scale: 1"=40'



LOCATION PLAN
Not to Scale
SEC 5, TWP 44, RGE 43 E

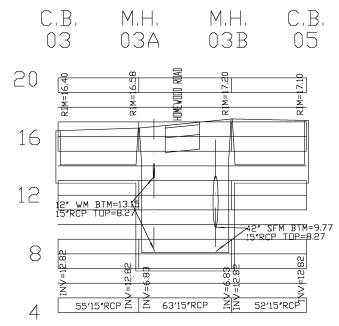


NOTE:
TOP OF CURB 0.5'
HIGHER THAN ASPHALT (TYPICAL)
FIRE HYDRANT MANUFACTURER:
AMERICAN DARLING
MODEL # 8848
GATE VALVE MANUFACTURER:
AMERICAN FLOW CONTROL
MODEL # 2500 DUCTILE IRON
RESISTANT WEDGE GATE VALVE
CORROSION BARRIER MATERIAL
APPLICATION-WILSON PAINTING
APPLICATION-MANSTRAY ML-72

LEGEND

- CB #15 CATCH BASIN W/STRUCTURE NO.
- EXISTING GRADE
- PROPOSED GRADE
- DIRECTION OF SURFACE FLOW W/X SLOPE
- PROPOSED FINISH FLOOR ELEVATION
- TYPE 'D' CURB
- TYPE 'E' CURB & GUTTER

NOTE:
PERIMETER OF SITE SHALL BE AT
OR ABOVE THE 10 YEAR 3 DAY STORM
ELEVATION 16.1
MIN.FIN.FL.=17.50
MIN.ROAD CROWN=16.40

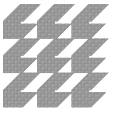


PROFILE
Scale: 1"=40' Horiz
1"=4' Vert

H.P. TOMPKINS, JR.
FLA. REG. 42975



WUD #03-019
DATE: 21-May-03 16:28



Robert G. Currie
Partnership, Inc.
Architects, Planners
Interior Designers
Robert G Currie AIA
Jess M Sowards AIA
Josef N Aguilera AIA

134 N.E. 1st Avenue
Dorcy Beach, Florida 33444
TEL: 561-278-4951
FAX: 561-243-8184
E-mail: RGP@RCURRIEARC.COM

ISSUED FOR
BOS
PERMIT
CONSTRUCTION 12.10.02

SEAL
STATE OF FLORIDA (PROF. SEAL)
PROFESSIONAL SURVEYOR AND MAPMAKER

PROJECT TITLE

EAST TRANSPORTATION FACILITY
VELCON GROUP INC.
ENGINEERS & SURVEYORS
1000 W. PALM BEACH BLVD.
PORT ST. LUCIE, FLORIDA 34953
(561) 879-0477
(704) 871-8889

CLIENT APPROVAL

REVISIONS
△COORD/PERMIT - 12.10.02
△SEE MARKS 12-11-02
△SEE MARKS 3-10-03

FILE NUMBER 1023

DRAWING TITLE

PAVING, GRADING AND DRAINAGE

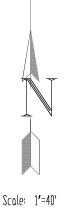
DATE

DRAWN BY

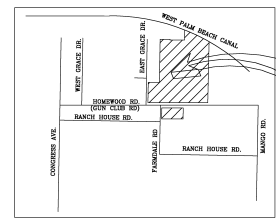
JOB NUMBER

DRAWING NUMBER

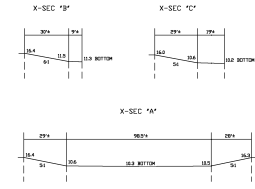
C.3



Scale: 1"=40'



PROJECT SITE



LOCATION PLAN
Not to Scale
SEC 5, TWP 44, RGE 43 E

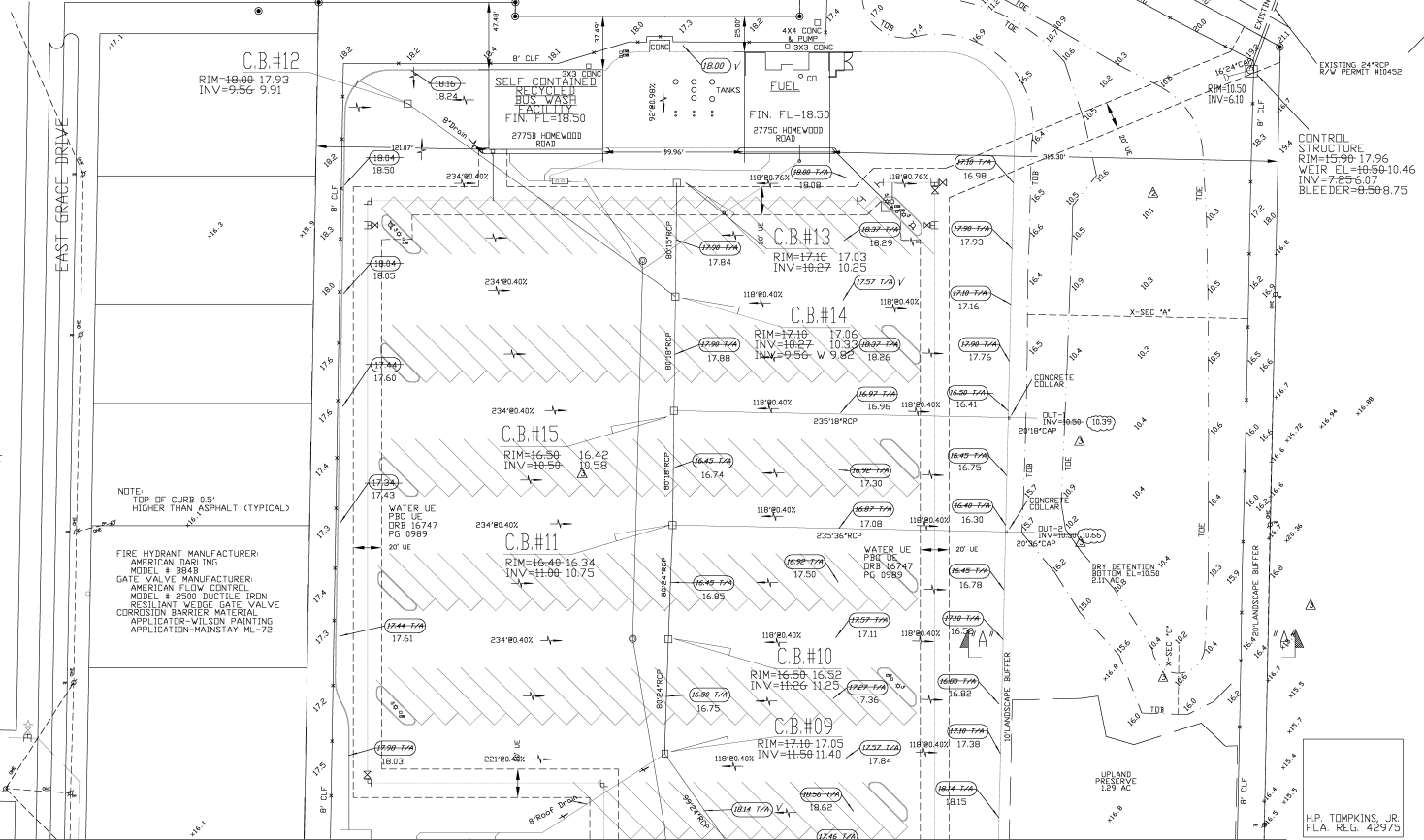
LEGEND

- CB #15
- CATCH BASIN W/STRUCTURE NO.
- EXISTING GRADE
- PROPOSED GRADE
- DIRECTION OF SURFACE FLOW V/X SLOPE
- PROPOSED FINISH FLOOR ELEVATION
- TYPE "D" CURB
- TYPE "F" CURB & GUTTER

NOTE:
PERIMETER OF SIFTS SHALL BE AT
OR ABOVE THIS 10 YEAR 3 DAY STORM
ELEVATION 18.14
MIN FIN FL=17.50
MIN ROAD CROWN=16.40

NOTE:
TOP OF CURB 0.5'
HIGHER THAN ASPHALT (TYPICAL)

FIRE HYDRANT MANUFACTURER:
AMERICAN DARLING
MODEL # 8848
GATE VALVE MANUFACTURER:
AMERICAN FLOW CONTROL
MODEL # 2500 DUCTILE IRON
RESISTANT WEEB GATE VALVE
CORROSION BARRIER MATERIAL
APPLICATION-VELCON PAINTING
APPLICATION-MAINSTAY ML-72



MATCH LINE (SEE SHEET NO. C-2)

H.P. TOMPKINS, JR.
FLA. REG. 42975



WUD #03-019
DATE: 21-May-03 16:22